

# 9100

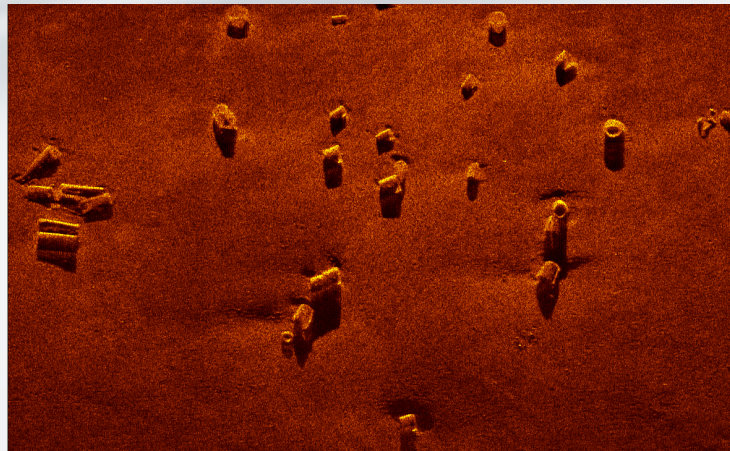
## LIGHT WEIGHT PORTABLE LITTORAL MINE COUNTERMEASURE SONAR (LMCS) SYSTEM

### FEATURES

- Ultra High Resolution for Mine Detection & Classification
- Dual Simultaneous Frequencies
- Easy to Setup and Operate
- Integrated SeeByte ATR
- Lightweight for 1-Person Deployment & Recovery
- Easy to Setup & Operate
- AC or DC power

### APPLICATIONS

- Mine Countermeasures
- Q Route Surveys
- ISR Missions (intel, surveillance & recon)
- IED Search & Location
- Port Security
- Hull Inspections
- Channel / Clearance Surveys
- Change Detection



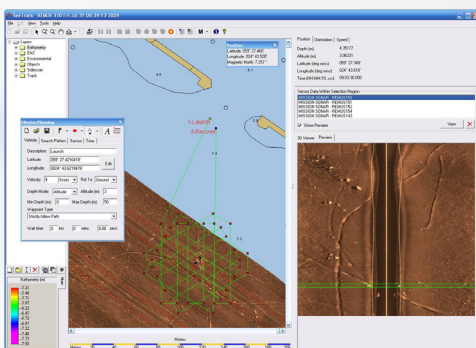
### LMCS

EdgeTech's LMCS is the world's most advanced mine hunting SONAR available. With their perfect combination of long range capability, ultra-high resolution and integrated SeeByte Automated Target Recognition (ATR) software these dual frequency SONARs provide extraordinary detection and classification proficiency in a variety of available platform systems. Each system is designed around the LMCS but is tailored to operational needs. From the leader in underwater imaging technology this line of affordable Commercial-Off-The-Shelf (COTS) systems is provided specifically for military missions including small boat operations, larger patrol craft, and Unmanned Surface or Underwater Vehicles. LMCS systems enable any Navy vessel to carry out effective minehunting operations due to their low cost and minimal space, weight, and manning requirements.

### 9100 Lightweight Portable System

EdgeTech's towed 9100 LMCS System was designed specifically for near shore use on smaller vessels such as Rigid-Hull Inflatable Boats (RHIBs) or vessels-of-opportunity where portability and ruggedness are key requirements. The 9100 is rapidly deployable and easy to use. The 600/1600 kHz dual simultaneous frequency towfish is optimally suited for mine countermeasures and underwater IED applications. The system provides an excellent combination of long-range search capability, ultra high frequencies for positive classification and identification as well as integrated SeeByte Automated Target Recognition software featuring Computer Aided Detection and Computer Aided Classification (CAD/CAC) functionality.

The 9100 System comes complete with a sturdy stainless steel towfish, portable water resistant topside processor, ruggedized laptop computer, and 50 meter Kevlar tow cable. The system is delivered in portable, durable cases for transport and storage. As with all EdgeTech systems, a safety recovery system is supplied in the event the towfish becomes snagged on an obstacle while in use. The 9100 can be powered by both AC and DC for added versatility.



For more information please visit [EdgeTech.com](http://EdgeTech.com)

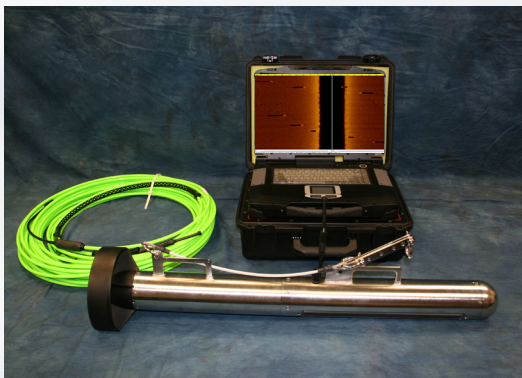
info@EdgeTech.com | USA 1.508.291.0057

# 9100

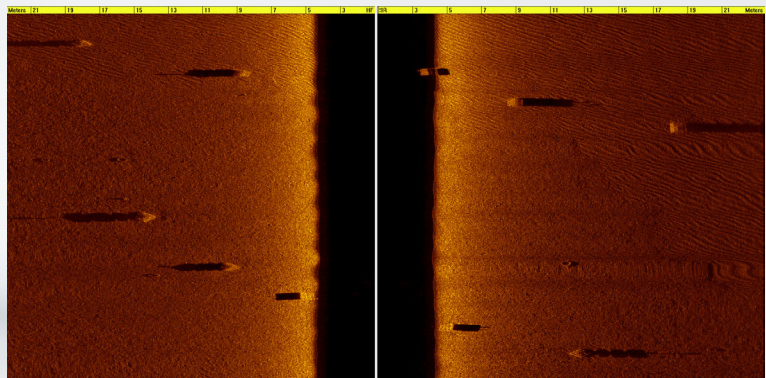
## LIGHT WEIGHT PORTABLE LITTORAL MINE COUNTERMEASURE SONAR (LMCS) SYSTEM

### KEY SPECIFICATIONS

SONAR	
Frequencies (Dual Simultaneous)	600/1600 kHz
Pulse Type	EdgeTech's Full Spectrum® CHIRP (user selectable CW pulses)
Operating Range	120m @ 600 kHz, 35m @ 1600 kHz
Horizontal Beam Width	0.33° @ 600 kHz, 0.20° @ 1600 kHz
Vertical Beam Width	50°
Resolution Across Track	1.5 cm @ 600 kHz; .6cm @ 1600 kHz
TOWFISH	
Material	Stainless Steel
Diameter	9.5 cm (3.75 inches)
Length	97 cm (38 inches)
Weight in Air	15 kg (34 pounds)
Standard Sensors	Roll, Pitch, Heading, Pressure (Depth)
Depth Rating	200m
Tow Cable	50m Kevlar cable included
SPLASH-PROOF TOPSIDE PROCESSOR	
Power Input	12-24 VDC or 115/230 VAC, 50/60 Hz
Connections	AC, DC, Ethernet (to laptop), Towfish
Hardware	Ruggedized splash-proof, drop & shock resistant laptop
Operating System	Windows® XP
Acquisition Software	EdgeTech DISCOVER with Optional ATR
ADDITIONAL COMPONENTS	
	Quick change tow bracket for ship hull inspections, keel weight, v-fin depressor wing



EdgeTech 9100 System



Mine-like targets

For more information please visit [EdgeTech.com](http://EdgeTech.com)

info@EdgeTech.com | USA 1.508.291.0057