

9300

MANEUVERABLE TOW BODY (MTB) LITTORAL MINE COUNTERMEASURE SONAR (LMCS) SYSTEM

FEATURES

- Ultra high resolution for mine detection and classification
- Dual simultaneous frequencies
- High speed data collection
- Multi-pulse technology
- Dynamically focused transducers
- Integrated SeeByte ATR
- Terrain-following capability

APPLICATIONS

- Mine Countermeasures
- Q Route Surveys
- ISR Missions [intel, surveillance & recon]
- IED Search & Location
- Port Security
- Hull Inspections
- Channel/Clearance Surveys
- Change Detection



LMCS

EdgeTech's LMCS is the world's most advanced mine hunting SONAR available. With their perfect combination of long range capability, ultra-high resolution and integrated SeeByte Automated Target Recognition (ATR) software these dual frequency SONARs provide extraordinary detection and classification proficiency in a variety of available platform systems. Each system is designed around the LMCS but is tailored to operational needs. From the leader in underwater imaging technology this line of affordable Commercial-Off-The-Shelf (COTS) systems is provided specifically for military missions including small boat operations, larger patrol craft, and Unmanned Surface or Underwater Vehicles. LMCS systems enable any Navy vessel to carry out effective minehunting operations due to their low cost and minimal space, weight, and manning requirements.

9300 MTB System

EdgeTech's 9300 Maneuverable Tow Body (MTB) LMCS is an active, towed platform with actuated fins and control loop software that maintains the sonar at optimal altitudes with precise steadiness for the finest sonar imagery. The 9300 is outfitted with a 600/1600 kHz dual frequency sonar. The 600 kHz frequency utilizes both the Multi-Pulse technology and Dynamically Focused transducers for high resolution mine detection at ranges up to 125 meters per side for a 250 meter swath at speeds up to 12 knots. The 1600 kHz frequency utilizes Dynamically Focused transducers for detailed classification and identification of mine- and IED-like targets with resolutions down to 0.8 cm. This rapidly-deployable system provides real-time sonar images allowing operators the ability locate, classify, mark and record mine-like objects and underwater terrain features.

The 9300 System includes a towfish, cable, which, launch & recovery system, operator station, and software (operating and ATR). The system is custom designed for installation on dedicated small to mid-size vessels enabling safe, 1-man or automated launch and recovery.

The 600/1600 kHz dual simultaneous frequency towfish is optimally suited for mine countermeasures and underwater IED applications. The system provides an excellent combination of long-range search capability, ultra high frequencies for positive classification and identification as well as integrated SeeByte Automated Target Recognition software featuring Computer Aided Detection and Computer Aided Classification (CAD/CAC) functionality.



For more information please visit EdgeTech.com

info@EdgeTech.com | USA 1.508.291.0057

9300

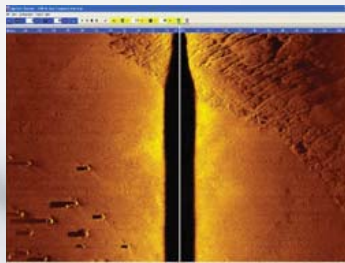
MANEUVERABLE TOW BODY (MTB) LITTORAL MINE COUNTERMEASURE SONAR (LMCS) SYSTEM

KEY SPECIFICATIONS

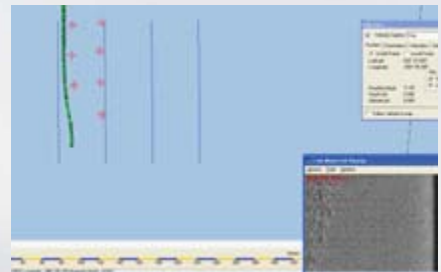
SONAR SPECIFICATIONS		
Frequency	1600 kHz Dynamically Focused	600 kHz Multi-Pulse Dynamically Focused
Pulse Type	Frequency Modulated Pulse (CHIRP)	
Pulse Length	0.5 to 2 ms	2 to 10 ms
Resolution (along track)	< 6 cm to < 17m 7 cm @ 20m 8 cm @ 25m 9 cm @ 30m 10.5 cm @ 35m	< 20 cm to 80 m then increasing to 28 cm at 125 m max. range
Resolution (across track)	0.8 cm	1 pulse 1.5 cm / PL 2 msec 2 pulse 3.0 cm / PL 4 msec 3 pulse 4.5 cm / PL 6 msec 4 pulse 6.0 cm / PL 10 msec
Max Operating Range	35 m/side (70m swath)	125 m/side (250m swath)
Operating Speed Envelope	2-6 knots typical	2-14 knots
Sonar Digitization	16 Bits	
Power	115/230 VAC at 200W max	
LMCS TOWFISH		
Length	173 cm (68 in.)	
Diameter	19 cm (7.5 in.)	
Weight	60 kg (132 lbs.)	
Array Length	123 cm (48 in.)	
Depth Rating	300 meters (984 feet)	
Standard Sensors	Heading, pitch, roll, depth	
Options	Altimeter, Responder, Magnetometer, USBL Tracking System, Custom Sensors	



Maneuverable Tow Body (MTB)



Sonar Image



Automatic Target Recognition (ATR)

For more information please visit EdgeTech.com

info@EdgeTech.com | USA 1.508.291.0057